



£900 Per
Calendar Month

Rowlands Road, Worthing

- Ground Floor Flat
- Modern Kitchen
- Shower Room
- EPC Energy Rating E
- Private Garden
- Double Bedroom
- Electric Heating
- * stock photos flat is unfurnished *

Robert Luff & Co Lettings are delighted to offer to the market this quaint 1 bedroom ground floor garden flat within walking distance from the town and Worthing seafront. Benefits of the property include open plan modern kitchen and living room, double bedroom with double doors leading out into the decked garden and modern shower room. Viewings highly recommended.

Available NOW.

* stock photos flat is unfurnished *

T: 01903 331247 E: info@robertluff.co.uk
www.robertluff.co.uk

**Robert
Luff & Co**
Sales | Lettings | Commercial



Accommodation

Kitchen/ Living Room 17'8" x 19'3" (5.38 x 5.87)

Open plan kitchen/ living room with newly fitted kitchen, integrated electric cooker and hob, extractor hood, light grey high gloss units with granite effect work tops, wood effect lino - Living room with TV and phone point, double aspect window and door leading into the garden.

Bedroom 8'0" x 6'9" (2.44 x 2.06)

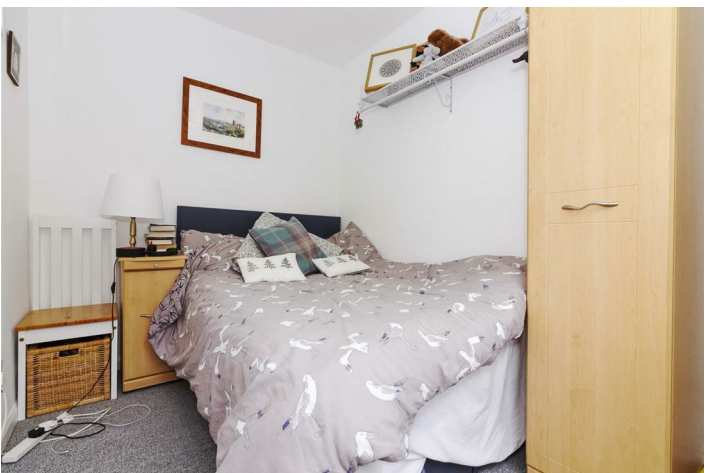
Double Bedroom with double doors leading out onto the garden.

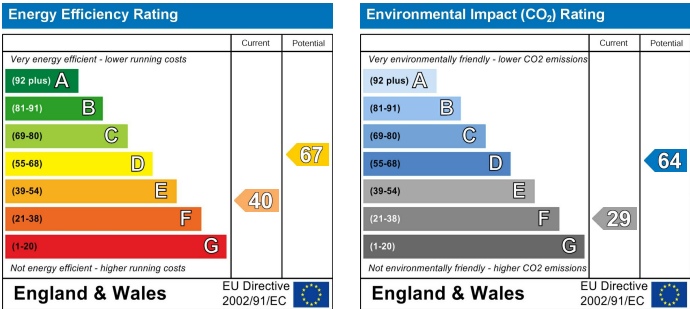
Hallway

Hallway from living room to shower room with 2 built in wardrobes.

Shower Room

Modern fitted shower room with granite effect splash back., white basin and WC, wood effect lino, heated towel rail and frosted double glazed window.





The services, systems and appliances listed in this section have not been tested by us and no guarantee as to their operating ability or efficiency is given. All photographs and measurements have been taken as a guide only and are not precise. Floor plans where included are not to scale and accuracy is not guaranteed. If you require clarification or further information on any points please contact us, especially if you are travelling some distance to view. All measurements are approximate.